



ATIR

BMW Around the Island Races 2025 (Special Edition)

Outrigger Canoe



Course Map and Instructions

The primary aim of these instructions is the safety of the crew competing in the race.

The next main consideration is fairness of racing. The third key aim is to ensure that all the other water users and official bodies are happy with our conduct and are willing to continue to allow us to run the event.

Crews or clubs that fail to follow these instructions may face disqualification and may not have their entries accepted next year.

Race Safety Officer

There will be one overall supervisor of the race once the crews have started. The Safety Officer is part of the overall race management team. Their role is to track the location of the outrigger fleet, ensure all crews are safely following the course and to react to any emergency situations that might arise. The Safety Officer reports to the Race Director.

Crews should immediately follow all directions from The Safety Officer.

Water Conditions

Crews will face a wide range of conditions during the event and should not underestimate how difficult sections of the course will be. Conditions will range from flat and calm waters, right through to large

swells and breaking waves. In places, the wake from commercial vessels can create difficult conditions for crew and steers. There are the Po Toi and Beaufort Islands as well as Cape D'Aguilar where you can expect significant swell, wind and waves!

Marine Traffic

There will be no special closures or restrictions to marine traffic for this event. Following the 'rules of the road', courtesy and a good lookout is essential.

The bulk of the course is in the 'Inshore Traffic Zone' where the likely traffic will be pleasure boats and small fishing vessels. Both of these types of vessel can be unpredictable and may have no experience of small paddling boats. Watch the shipping lanes, do not stray into the East Lamma Channel. Again, a good look out is essential.

Communications

It is essential that we are able to maintain communications at all times between the Safety Officer and each crew. We require one dedicated **Team manager to be on board the team's escort boat at all times.**

The Team Manager must provide race officials with the phone number they will use to maintain contact during the entire race. Contact throughout the race will be done on WhatsApp.

Team Managers are required to have the phone on themselves at all times.

How to do a position report

Position reports are an essential part of the race and help the Safety Officer track the location and progress of the fleet.

To prevent confusion and make everyone's day easier, position reports should:

State clearly where you are. (e.g. "Turning Point at Chesterman")

A WhatsApp group will be set up prior to race day for team managers and the race Safety Officer to communicate position reports.

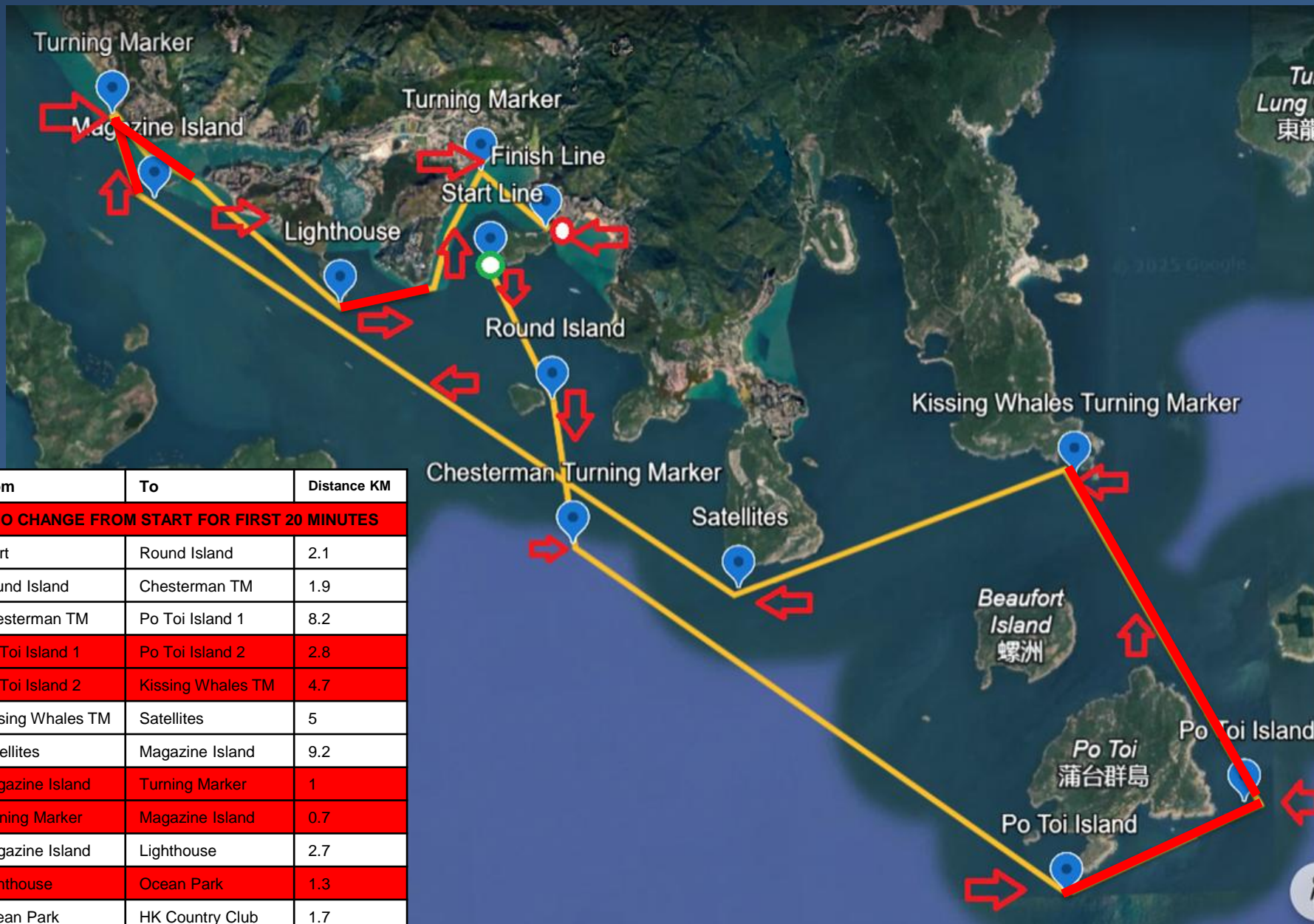
It is essential to have clear, concise and unambiguous information. Please refer to the Team Manager briefing document for further information.

Organised by

Endorsed by

Supporting Organisation

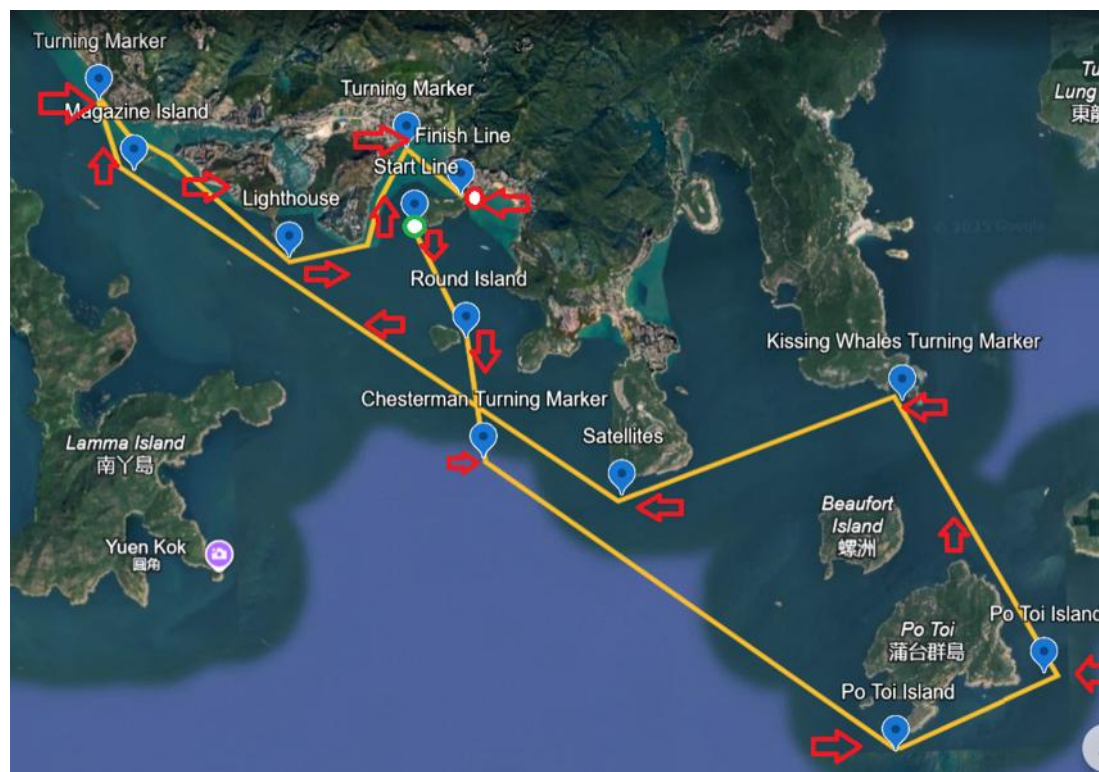




From	To	Distance KM
NO CHANGE FROM START FOR FIRST 20 MINUTES		
Start	Round Island	2.1
Round Island	Chesterman TM	1.9
Chesterman TM	Po Toi Island 1	8.2
Po Toi Island 1	Po Toi Island 2	2.8
Po Toi Island 2	Kissing Whales TM	4.7
Kissing Whales TM	Satellites	5
Satellites	Magazine Island	9.2
Magazine Island	Turning Marker	1
Turning Marker	Magazine Island	0.7
Magazine Island	Lighthouse	2.7
Lighthouse	Ocean Park	1.3
Ocean Park	HK Country Club	1.7
HK Country Club	Finish	1
NO CHANGE ZONES		

Course Maps and Instructions

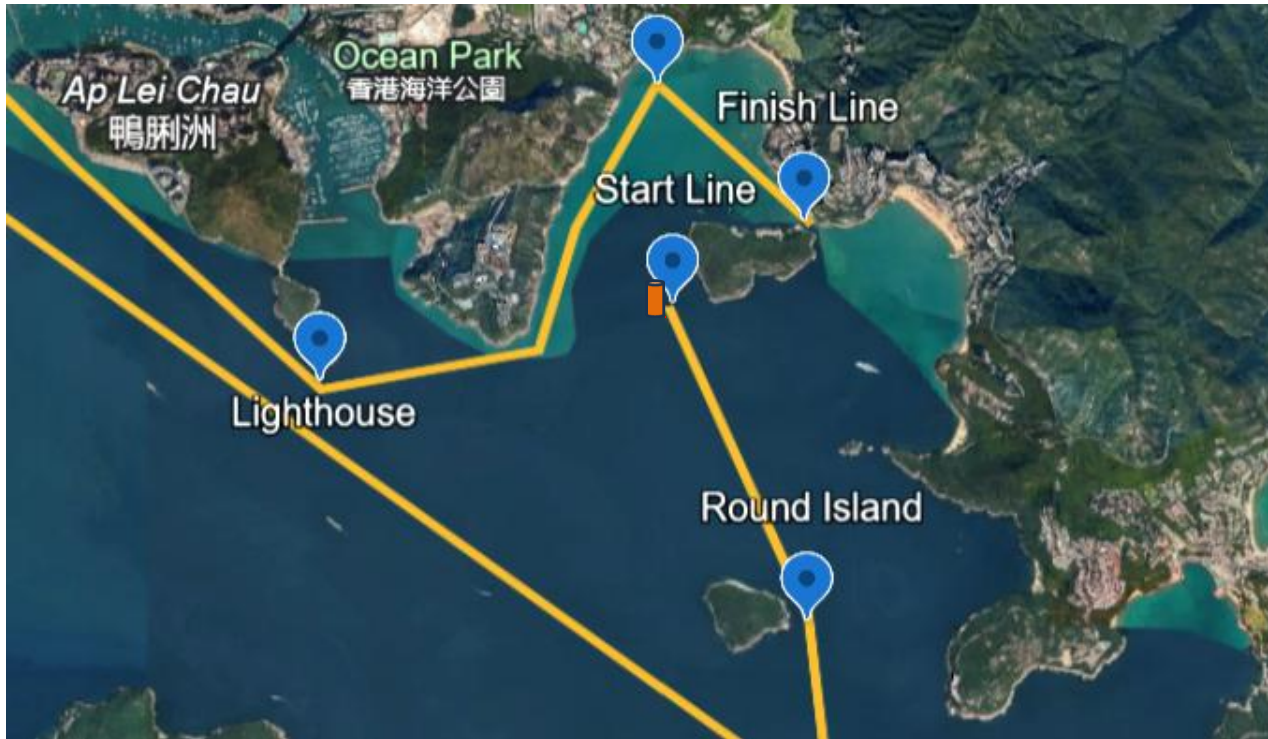
- The 42 km sea change race starts and ends at Middle Island near Deep Water Bay. The start line is set adjacent to the southeastern section of Middle Island and takes a direct line south towards the west side of Round Island.
- From Round Island continue further south out towards the Chesterman Buoy.
- Crews will take a left turn around the orange Turning Marker that is positioned just south of the Chesterman Buoy and out towards the southern tip of Po Toi Island.
- The course then tracks anticlockwise around the southern tip of the Island, turning north (keeping Po Toi and Beaufort Islands on your left) up towards Kissing Whales and the orange Turning Marker.
- Make a left turn around the orange Turning Marker and continue tracking northwest past Satellites on your right, passing Round Island on your right.
- As you head towards Magazine Island (keep to the left of Magazine Island) and then directly towards Waterfall Bay at Pok Fu Lam.
- Take a right turn around the orange Turning Marker positioned in front of waterfall bay.
- Head southwest towards Magazine Island (keeping Magazine Island on your right).
- Take a left turn at the lighthouse heading towards Ocean Park. From there continue to head north towards the Country club buoy.
- Take a final right turn towards Middle Island to pass the finish line in front of the Rowing Boat House on Middle Island.



Note

Due to marine traffic and expected rougher sea conditions around Po Toi and Beaufort Islands, sea changes will be restricted at certain parts of the course. There will be no dry change option this year.

The Start



Start Line

- The start line is set adjacent to the southeastern section of Middle Island and takes a direct line south towards the west side of Round Island.
- The race start boat will be anchored to the south east of Middle Island in-between Middle Island and Ocean Park.
- Crews will start in between the boat and the mark.
- Crews will be marshalled and aligned with the aid of a megaphone from the boat.
- Flags and an air horn will mark the start.
- The exact start times and format will be published prior to the event. (Please refer to the Race Briefing document for further information.)

NO CHANGE ZONE!

The first 20 minutes of the race

A message will be sent from the race director (via WhatsApp) to team managers when the 20 minutes is complete.

Round Island and out towards Chesterman Buoy

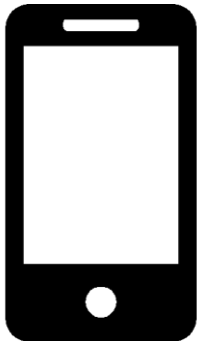


- Keep Round Island on your Right



- Head South Towards Chesterman. There will be a large orange marker positioned to the right of the buoy.
- Make a left turn around the large orange Turning Marker so that you are passing between the buoy & turning marker

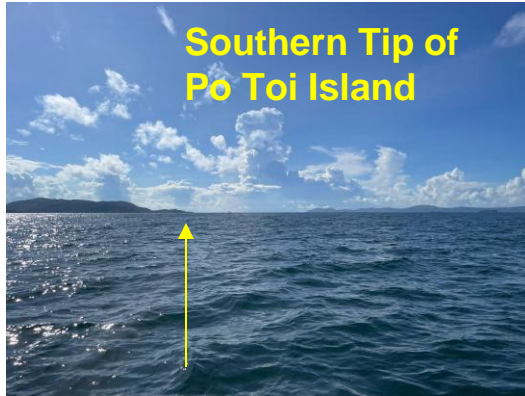
**No. 1
CHESTERMAN
CHECK POINT!**



1st Orange Turning Marker (Chesterman Buoy)

- From Round Island continue further south out towards the Chesterman Buoy.
- Crews will take a left turn around the orange Turning Marker that is positioned just south of the Chesterman Buoy and out towards the southern tip of Po Toi Island.

Head South towards Po Toi and Beaufort Islands



- Once you make a left ama side turn around the orange marker at Chesterman, head South towards Po Toi Island.



- As you approach the southern tip of Po Toi, make a wide left turn to head north TO ENTER THE NO CHANGE ZONE.



- Keep tracking north passed the southwest tip of Beaufort Island on your left.

Around Po Toi and Beaufort Islands

- From Chesterman turning marker paddle out towards the Southern most tip of Po Toi Islands.
- The course then tracks anticlockwise around the southern tip of the Island, turning north (keeping Po Toi and Beaufort Islands on your left) up towards Kissing Whales and the orange Turning Marker.



- Keep tracking north passed Beaufort Island on your left, heading north towards Kissing Whales.

NO CHANGE ZONE

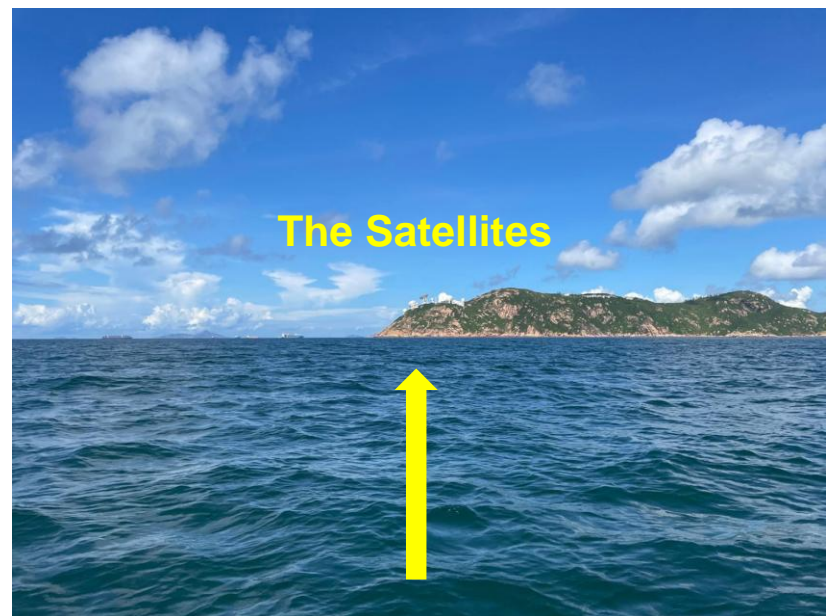
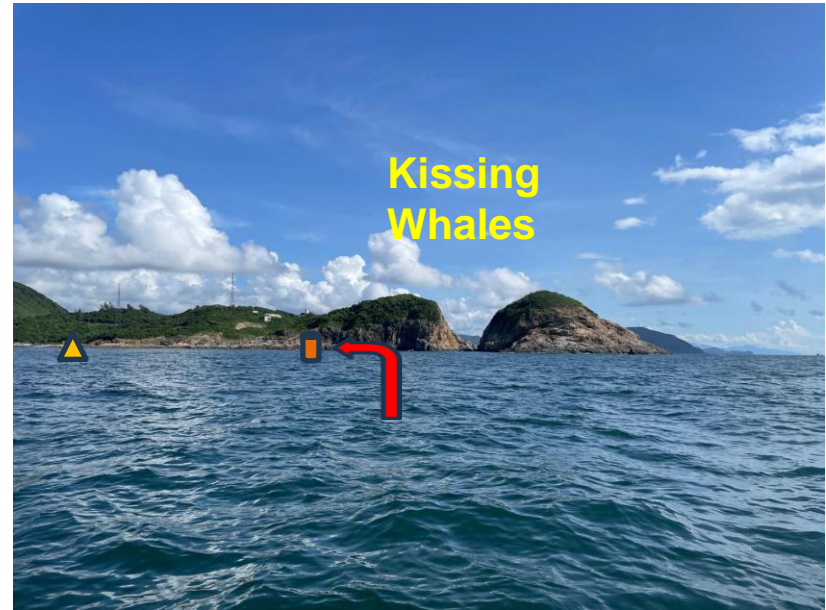
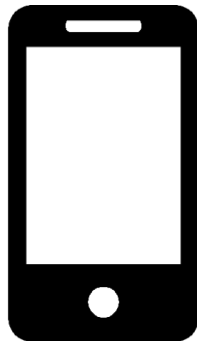
The ENTIRE Eastern Side of both Po Toi and Beaufort Islands to Kissing Whales Turning Marker

Head North towards Kissing Whales

2nd Orange Turning Marker (Kissing Whales)

- Head North from Beaufort Island towards Kissing Whales.
- As you approach Kissing Whales from the South, keep a watch out for the second orange turning marker positioned on the west side of Kissing Whales near the Cape D'Aguilar Yellow buoy.
- Make a left ama-side turn around the Orange Turning Marker.
- Cape D'Aguilar Yellow Buoy is to the west of the turning marker.
- The course then tracks west towards the Satellites.

**No. 2
KISSING WHALES
CHECK POINT!**



From Satellittes to Round Island and on to Magazine Island



- Continue tracking northwest past Satellittes on your right, and heading towards Round Island



- As you pass Round Island on your right, continue on towards the Lighthouse
- Keep further left of the lighthouse to avoid returning canoes and support boats in the opposite direction



- As you head towards Magazine Island (keep to the left of Magazine Island) and then directly towards Waterfall Bay at Pok Fu Lam.
- Track to ensure you pass to the left of Magazine Island.

Magazine Island to Waterfall Bay Turning Marker , Pok Fu Lam

Aberdeen Harbour

- There is a No-Change zone that covers the two entrances to Aberdeen Harbour.
- Stay in the in-shore zone, outside of the shipping channel off Ap Lei Chau. Do not stray into the East Lamma Channel.
- The No-Change zone applies on either side of this small (Magazine) island.



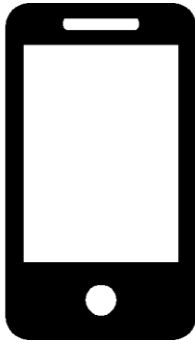
East Lamma Channel – busy shipping lane. Cyberport in the background

NO CHANGE ZONE
Aberdeen Typhoon Shelter –
both there and back.



Waterfall Bay Turning Marker to Ocean Park

No. 3
WATERFALL BAY
CHECK POINT!



Aberdeen Harbour

- From Waterfall Bay head back past Magazine Island and the Aberdeen Harbour no change zone towards Ocean Park.
- There is another no change zone before Ocean Park for the other entrance/exit to Aberdeen Harbour

NO CHANGE ZONE
Aberdeen Typhoon Shelter – both there
and back.



Ocean Park – Deep Water Bay – Finish (Middle Island)

Ocean Park to Deep Water Bay Buoy

- After the other no change zone before Ocean Park for the other entrance/exit to Aberdeen Harbour, head towards Deep Water Bay.
- Turn round the yellow buoy at Country Club.
- Head straight back to the finish line.



NO CHANGE ZONE

Aberdeen Typhoon Shelter – other entrance / exit before Ocean Park

Finish – CANOES ONLY

Head towards the yellow buoy at HK Country Club (yellow circle) and down to the finish marker (red arrow)

Finish – ESCORT BOATS

Must head straight to Middle Island (thick blue line) and not follow the canoes to the finish.